

Xi2-24 Zone 1 Rim Joist Uplift Hook Up



Strap can either be bolted with the swivel to the end of bracket, slid through swivel connector or through the slot in the bracket and crimped to fit. Provides joist bracket attachment for uplift strap.

Installs with (2) 1/2" X 3.25" w/ minimum 3" threads lag bolts from the bottom into the perimeter joist rail.



**Rim Joist Bracket
#59699**

4-11/16" x 2.75"
9 ga. Carbon Steel - Galvanized
3,150 lb. Design Load.



**Lag Bolt
#10424**

1/2" x 3.25"
w/min. 3" threads.

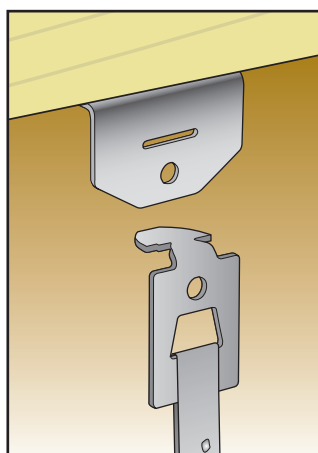
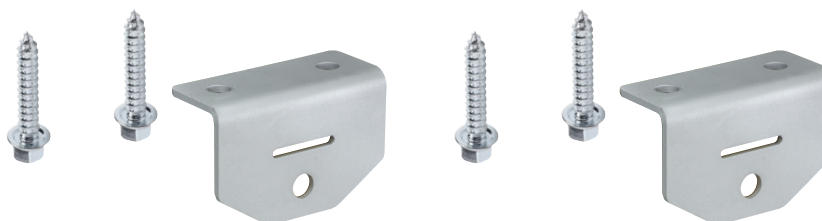
Rim Joist Bracket Kit #59700

Capacity 3,150 lbs.

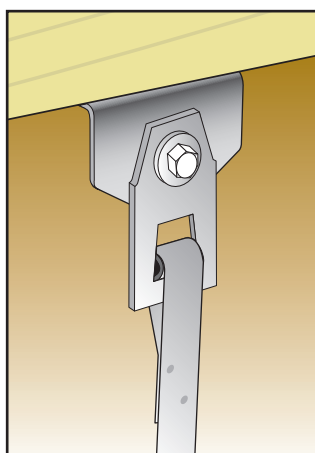
Kit Includes:

2 - Wall Brackets

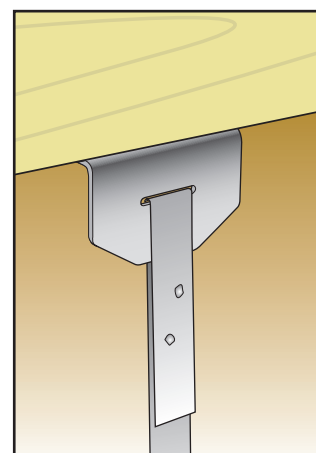
4 - Lag Bolts



**Hook Up
w/ Universal Strap**
59207 - 5 ft. Length
59208 - 6 ft. Length
3,150 lb. Design Load.



**Hook Up
w/ Swivel Strap**
59725 - 5 ft. Length
59726 - 6 ft. Length
3,150 lb. Design Load.



Rim Joist Bracket w/ Strap
59698 - 5 ft. Length
3,150 lb. Design Load.